

Index

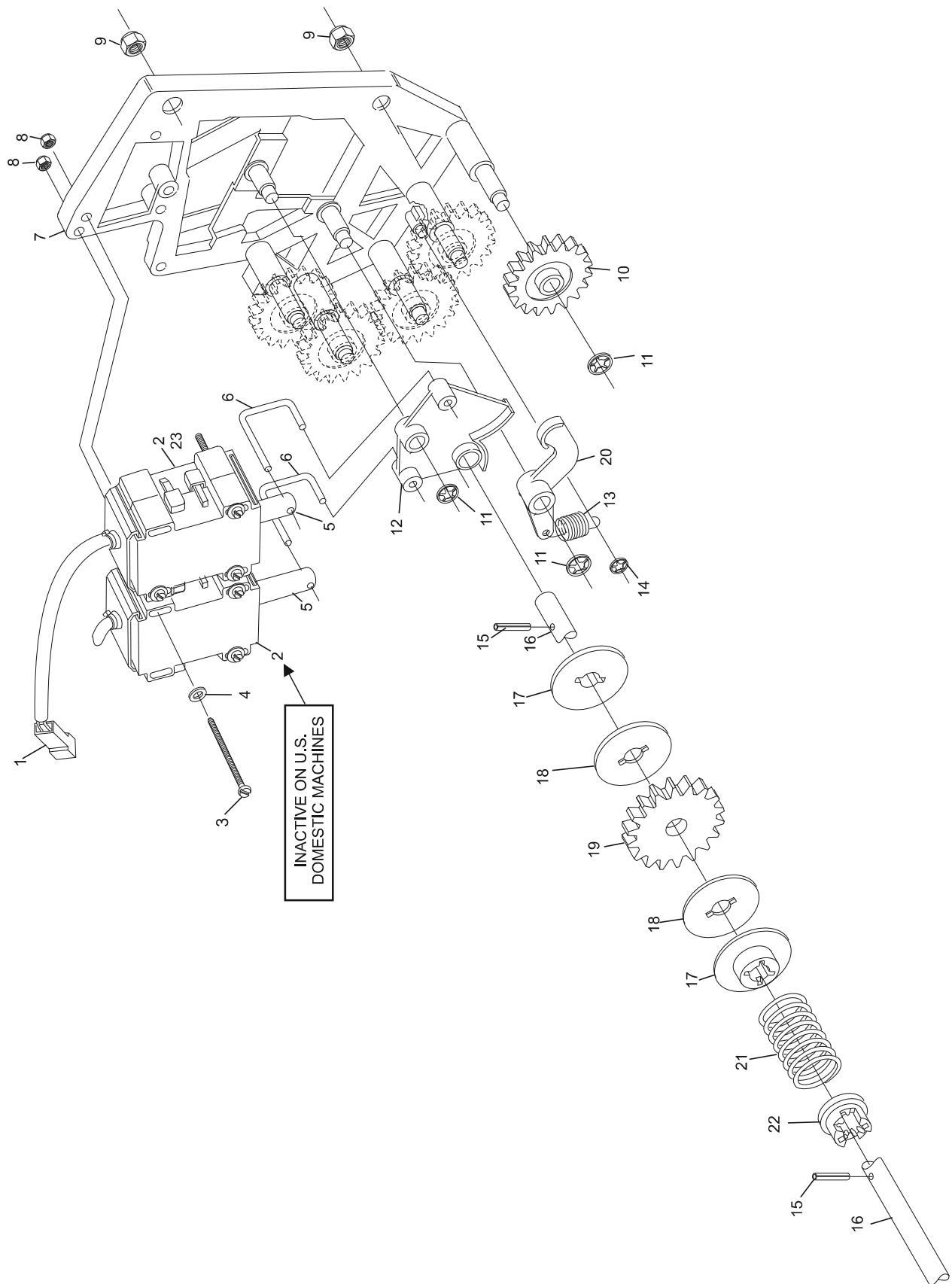
No.	Part No.	Description
1.	N.A.	Plug Only
2.	*99-060219-004	Solenoid Assembly w/Plug (red box)
3.	11-052202-001	Slotted Machine Screw (5 mm x 55 mm)
4.	11-052039-001	Flat Washer (5.3 mm)
5.	99-060133-004	Plunger
6.	47-071865-004	Connecting Link
7.	47-071858-002	Solenoid Holder
8.	11-051742-001	Locknut (5 mm)
9.	11-051745-001	Locknut (10 mm)
10.	47-072023-004	Cluster Gear
11.	11-053478-001	N.A. Seed Nut (8 mm)
	47-861050-000	R.O. Speed Nut (8 mm) Pkg. of 10
12.	47-071859-004	Pivot Lever Plate
13.	47-071866-004	Tension Spring
14.	11-053481-001	Speed Nut (5 mm)
15.	11-052688-001	N.A. Rolled Pin (3 mm x 18 mm)
	47-861051-009	R.O. Roll Pin (Pkg. of 20)
16.	47-071883-004	Clutch Shaft
17.	47-071863-004	Spring Retainer
18.	47-071864-004	Clutch Disc
19.	47-071862-004	Clutch Gear
20.	47-071860-004	Pivot Lever
21.	47-071868-004	Compression Spring
22.	47-071869-003	Spring Tightener
23.	*47-243030-004	N.A. Solenoid Assembly w/Plug (silver and consolidated box)
	99-070356-004	R.O. Solenoid (Red Box)

N.A. = No Longer Available

R.O. = Replacement Option

* Does not include Index No. 5, Plunger

Gear Cluster Assembly



INACTIVE ON U.S.
DOMESTIC MACHINES

Gear Cluster Assembly