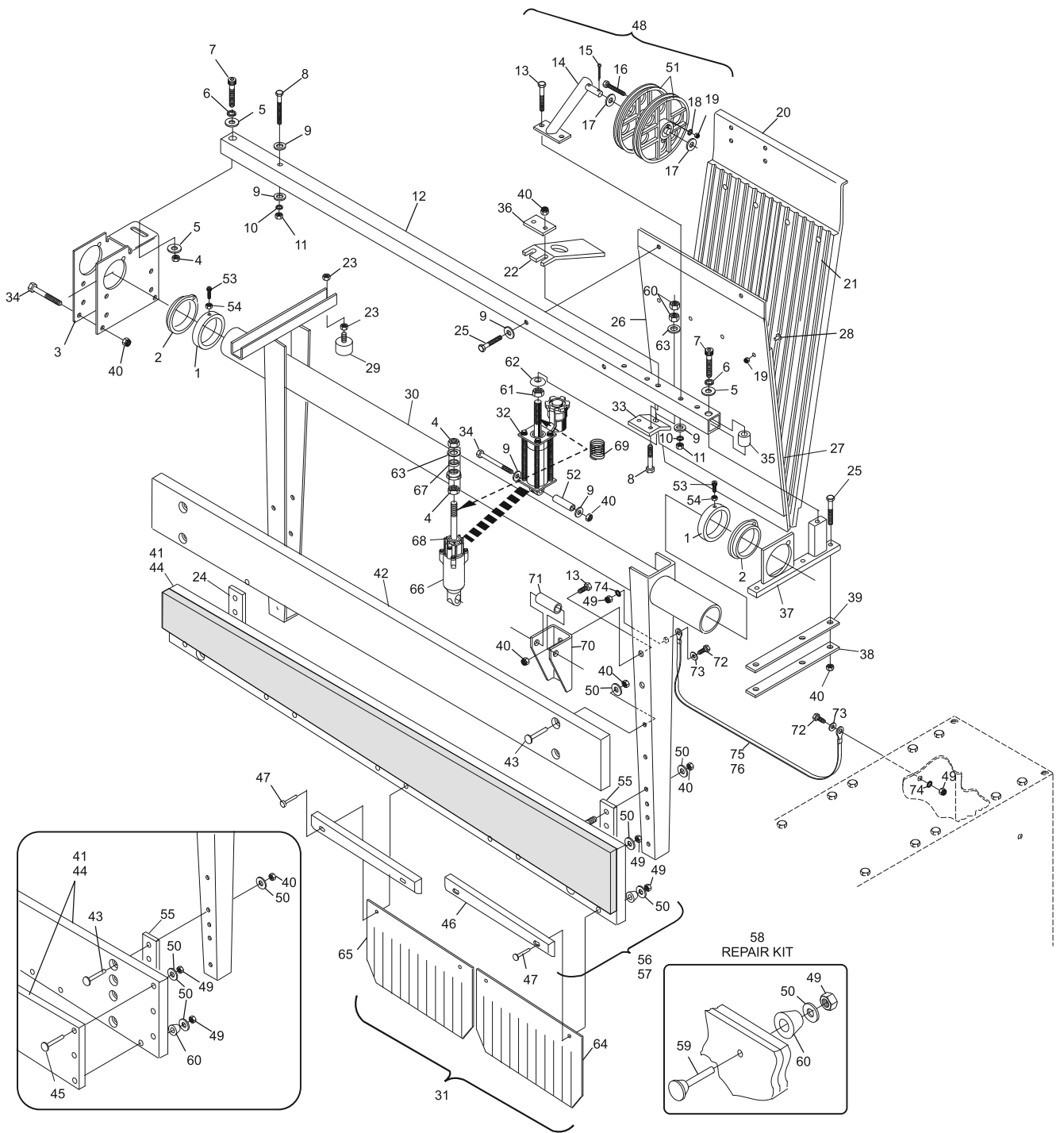


Index			Index		
No.	Part No.	Description	No.	Part No.	Description
1.	47-020953-004	Stop Collar	36.	47-021120-004	Mounting Plate
2.	99-010108-004	Bearing	37.	47-020947-003	Bearing Block
3.	47-021466-001	Bearing Block	38.	N.A.	Wood Shim (5 mm)
4.	11-051706-001	Hex Nut (12 mm)	39.	47-021318-003	Wood Shim (10 mm)
5.	11-052024-001	N.A. Flat Washer (13 mm)	40.	11-051745-001	Locknut (10 mm)
	47-861010-001	R.O. Flat Washer (13 mm) Pkg. of 20	41.	47-025045-009	R.H. Ball Cushion Board w/Facing (even lane)
6.	11-051772-001	Lockwasher (12 mm)	42.	47-021872-003	Top Ball Cushion Board
7.	11-051564-009	Socket Hd. Cap Screw (12 mm x 60 mm)	43.	11-052618-001	Carriage Bolt (10 mm x 50 mm)
8.	11-051012-001	Hex Hd. Cap Screw (10 mm x 70 mm)	44.	47-025044-009	L.H. Ball Cushion Board w/Facing (odd lane)
9.	11-052050-001	Flat Washer (10.5 mm)	45.	11-052603-001	Carriage Bolt (8 mm x 45 mm)
10.	11-051771-001	Lockwasher (10 mm)	46.	47-026102-009	AP Impact Strips (Qty. 2)
11.	11-051703-001	Hex Nut (10 mm)		47-021010-003	Impact Strip (Black) (Qty. 1)
12.	47-020948-003	Transverse Bar	47.	11-051055-001	Hex Hd. Cap Screw (8 mm x 60 mm)
	47-024077-003	Transverse Bar (short pit)	48.	47-021195-002	Pulley Holder Complete
13.	11-051058-001	Hex Hd. Cap Screw (10 mm x 55 mm)	49.	11-051744-001	Locknut (8 mm)
14.	47-021009-002	Pulley Holder	50.	11-052018-001	Flat Washer (10.5 mm)
15.	11-051786-001	Split Pin (2.5 mm x 25 mm)	51.	47-022410-003	Pulley w/Bearing
16.	11-051014-001	Hex Hd. Cap Screw (6 mm x 45 mm)	52.	47-021112-004	Bushing
17.	11-052012-001	Flat Washer (18 mm)	53.	11-051515-001	Socket Hd. Cap Screw (6 mm x 18 mm)
18.	11-052048-001	Flat Washer (6.4 mm)	54.	11-051702-001	Hex Nut (6 mm)
19.	11-051743-001	Locknut (6 mm)	55.	47-021488-004	Long Spacer
20.	N.A.	Long Brake Plate (for single feed distributors)	56.	N.A.	L.H. Ball Cushion Frame Assembly odd lane Complete
21.	N.A.	Rubber Material (rear)	57.	N.A.	R.H. Ball Cushion Frame Assembly even lane Complete
22.	47-022098-004	Hydraulic Protector Plate	58.	47-274281-009	Ball Cushion Repair Kit
23.	11-051704-001	Hex Nut (8 mm)	59.	47-024276-004	Rubber Head Screws
24.	47-021489-004	Short Spacer	60.	47-023660-004	Cap
25.	11-051052-001	Hex Hd. Cap Screw (10 mm x 45 mm)	61.	N.A.	Jam Nut (12 mm x 8 mm)
26.	N.A.	Short Brake Plate	62.	47-021119-004	Special Round Top Nut (12 mm)
27.	N.A.	Rubber Material (forward)	63.	11-052015-001	Flat Washer (13 mm)
28.	11-051879-001	N.A. Truss Hd. Machine Screw (6 mm x 20 mm)	64.	N.A.	R.H. Cushion Flap (even lane)
	47-861007-001	R.O. Truss Hd. Machine Screw (6 mm x 20 mm) Pkg. of 5	65.	N.A.	L.H. Cushion Flap (odd lane)
29.	11-053578-000	Rubber Bumper - male (8 mm)	66.	99-020402-002	N.A. Ball Cushion Hydraulic - Complete (all GS Pinsetters)
30.	47-025639-009	Ball Cushion Frame w/Bracket (for both R.H. and L.H. machines)		99-026121-000	R.O. Ball Cushion Hydraulic Assembly
31.	47-274888-009	Cushion Flap Kit Complete	67.	47-021108-004	Spacer (used in new and old Shock)
32.	N.A.	Ball Cushion Hydraulic Complete	68.	11-055351-000	Sealing Ring (all GS Shocks)
	99-020402-002	N.A. Cushion Flap Assembly	69.	47-071602-004	Compression Spring
	99-026121-000	R.O. Hydraulic Ball Cushion Assembly	70.	47-025637-003	Bracket
33.	N.A.	Hydraulic Mounting Plate	71.	47-025638-004	Spacer
34.	11-051013-001	Hex Hd. Cap Screw (10 mm x 90 mm)	72.	11-051010-001	Hex Head Cap Screw (8 mm x 20 mm)
35.	47-021110-004	Spacer	73.	11-052003-001	Flat Washer (8 mm)
			74.	11-055015-001	Starlock Washer (8 mm)
			75.	47-245788-003	N.A. Ground Strap - only
			76.	47245788-009	Ground Strap Kit includes mounting hardware

N.A. = No Longer Available
R.O. = Replacement Option

Ball Cushion Assembly



Ball Cushion Assembly