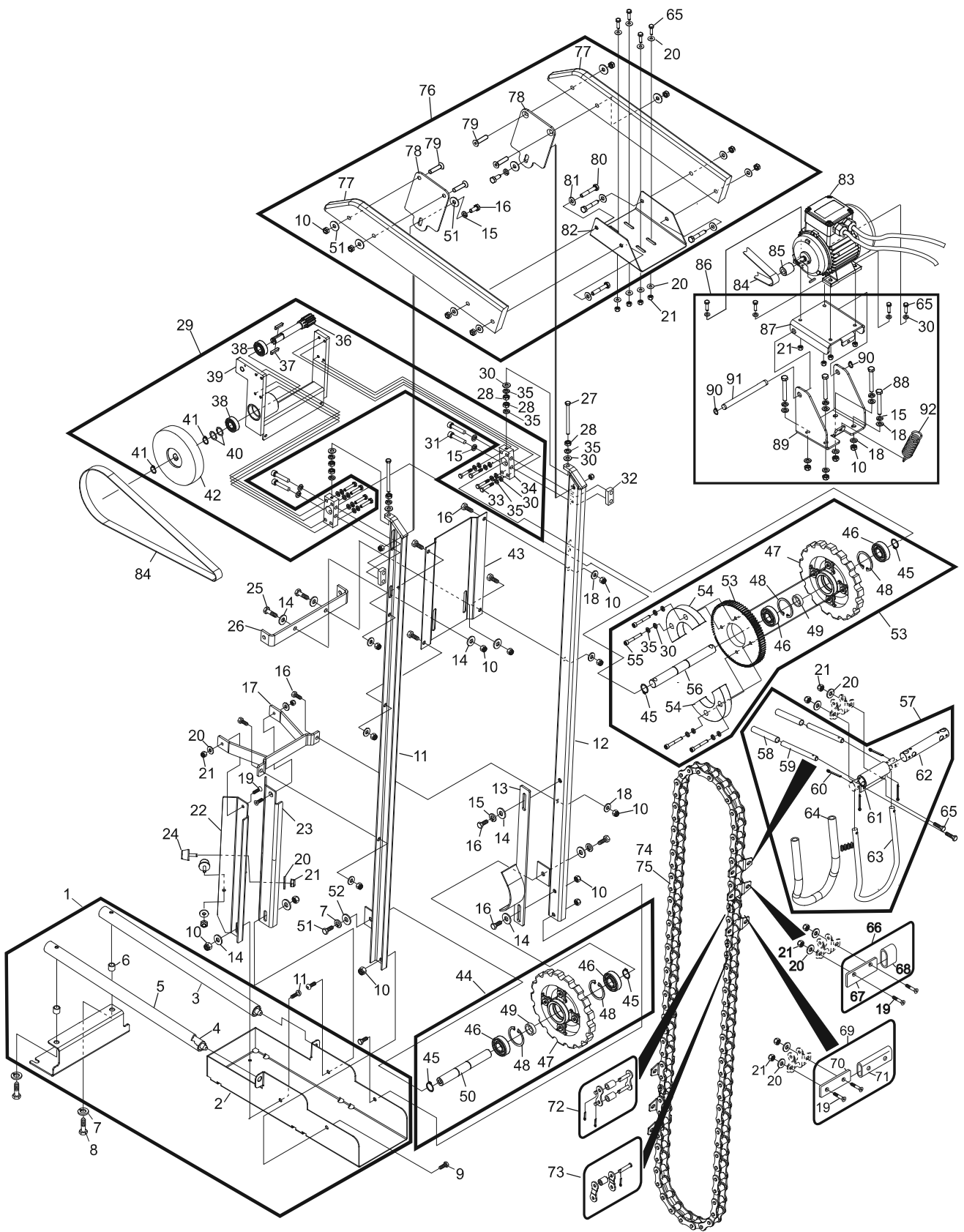


Index No.	Part No.	Package / Order Reference	Description
1.	55-109300-009		Assembly - Surface Return Diverter
2.	55-109284-000		Diverter
3.	55-109278-009		Assembly - Ball Rod Diverter (Covered)
4.	55-109278-000		Ball Rod Diverter (Uncovered)
5.	47-034730-004		Plastic Tube Cover
6.	47-035214-004		Distance Ring
7.	11-051771-000		Lock Washer (M10)
8.	11-051045-001		Hex Head Cap Screw (M10 x 30 mm)
9.	11-051038-001		Hex Head Cap Screw (M8 x 16 mm)
10.	11-051744-001		Locknut (M8)
11.	55-108888-000		Side Frame Left Hand
12.	55-108887-000		Side Frame Right Hand
13.	55-108633-000		Paddle Turn Cam
14.	11-052006-001		Flat Washer - Thick
15.	11-051770-001		Lock Washer (M8)
16.	11-051010-001		Hex Head Cap Screw (M8 x 20 mm)
17.	55-108629-000		Main Holder
18.	11-052003-001		Flat Washer (M8)
19.	11-052945-001		Socket Flat Head Screw
20.	11-052037-001		Flat Washer (M10)
21.	11-051743-001		Locknut (M6)
22.	55-108631-000		Holder Left Hand
23.	55-108630-000		Holder Right Hand
24.	55-108632-000		Rubber Bumper
25.	11-051015-001		Hex Head Cap Screw (M8 x 25 mm)
26.	47-037757-000		Mounting Bracket
27.	11-051024-001		Hex Head Cap Screw (M6 x 70 mm)
28.	11-051702-001		Hex Nut (M10)
29.	55-108890-009		Assembly - Upper Drive Support
30.	11-052008-001		Flat Washer (M6)
31.	11-051525-001		Socket Head Cap Screw (M8 x 30 mm)
32.	55-108483-000		Nut Plate
33.	11-051022-000		Hex Head Cap Screw (M6 x 30 mm)
34.	55-108599-000		Adjustment Block
35.	11-051769-001		Lock Washer (M6)
36.	55-108601-000		Pinion Shaft
37.	11-053501-000		Key
38.	11-430006-000		Bearing
39.	55-108891-000		Drive Mounting Block
40.	11-054112-000		Shim Washer
41.	11-051858-000		External Retaining Ring
42.	55-108364-000		Flat Belt Pulley
43.	55-108889-000		Support Pan
44.	55-108597-000		Assembly - Lower Drive Support
45.	11-051853-000		External Tooth Retaining Ring
46.	11-430050-000		Bearing
47.	55-108471-000		Sprocket
48.	11-051901-000		Retaining Ring
49.	55-108540-000		Distance Ring
50.	55-108397-000		Lower Drive Shaft
51.	11-051019-001		Hex Head Cap Screw (M10 x 25 mm)
52.	11-052018-001		Flat Washer (M10)
53.	55-108498-000		Large Gear
54.	55-108499-000		Bumper Ring
55.	11-051574-001		Socket Head Cap Screw (M6 x 45 mm)
56.	55-108374-000		Drive Shaft
57.	55-108608-000		Assembly Ball Paddle
58.	55-108613-000		Plastic Tubing
59.	55-108611-000		Roll Pin
60.	11-051792-000		Split Pin
61.	55-108612-000		Bracket
62.	55-108609-000		Hinge Shaft
63.	55-108610-000		Ball Paddle
64.	55-108614-000		Protector Sleeve
65.	11-051018-000		Hex Head Cap Screw
66.	55-108625-009		Paddle Buffer
67.	55-108626-000		Paddle Plate
68.	55-108627-000		Paddle Bumper
69.	55-108606-009		Assembly - Ball Paddle Stop
70.	55-108606-000		Paddle Stop
71.	55-108607-000		Protector Sleeve
72.	55-108620-000		Chain Connecting Link
73.	55-108892-CO3		Chain Offset Link
74.	55-108892-000		Chain Complete
75.	55-108892-009		Chain Complete w/Ball Paddles
76.	47-037711-000		Upper Transition Track
77.	47-037763-000		Surface Guide Rail
78.	47-037763-000		Elevator Transition Mount
79.	11-052952-000		Socket Flat Head Cap Screw
80.	11-051085-001		Hex Head Cap Screw (M8 x 45 mm)
81.	47-052013-001		Flat Washer
82.	47-037711-000		Upper Transition Plate
83.	55-108388-208		Motor with Cables and Pulley, 208VAC
	55-108388-220		Motor with Cables and Pulley, 220VAC
	55-108388-380		Motor with Cables and Pulley, 380VAC
84.	55-108392-000		Flat Belt
85.	55-108541-000		Motor Pulley, 50Hz
	55-108317-000		Motor Pulley, 60Hz
86.	55-109343-000		Motor Mount Assembly
87.	55-109341-000		Upper Holder Plate Motor Mount
88.	11-051054-001		Hex Head Cap Screw (M8 x 60 mm)
89.	55-109340-000		Lower Holder Plate Motor Mount
90.	11-051851-000		External Tooth Retaining Ring
91.	55-109342-000		Motor Mount Shaft
92.	47-095923-004		Spring

## Ball Elevator (SURFACE)



**Ball Elevator (SURFACE)**