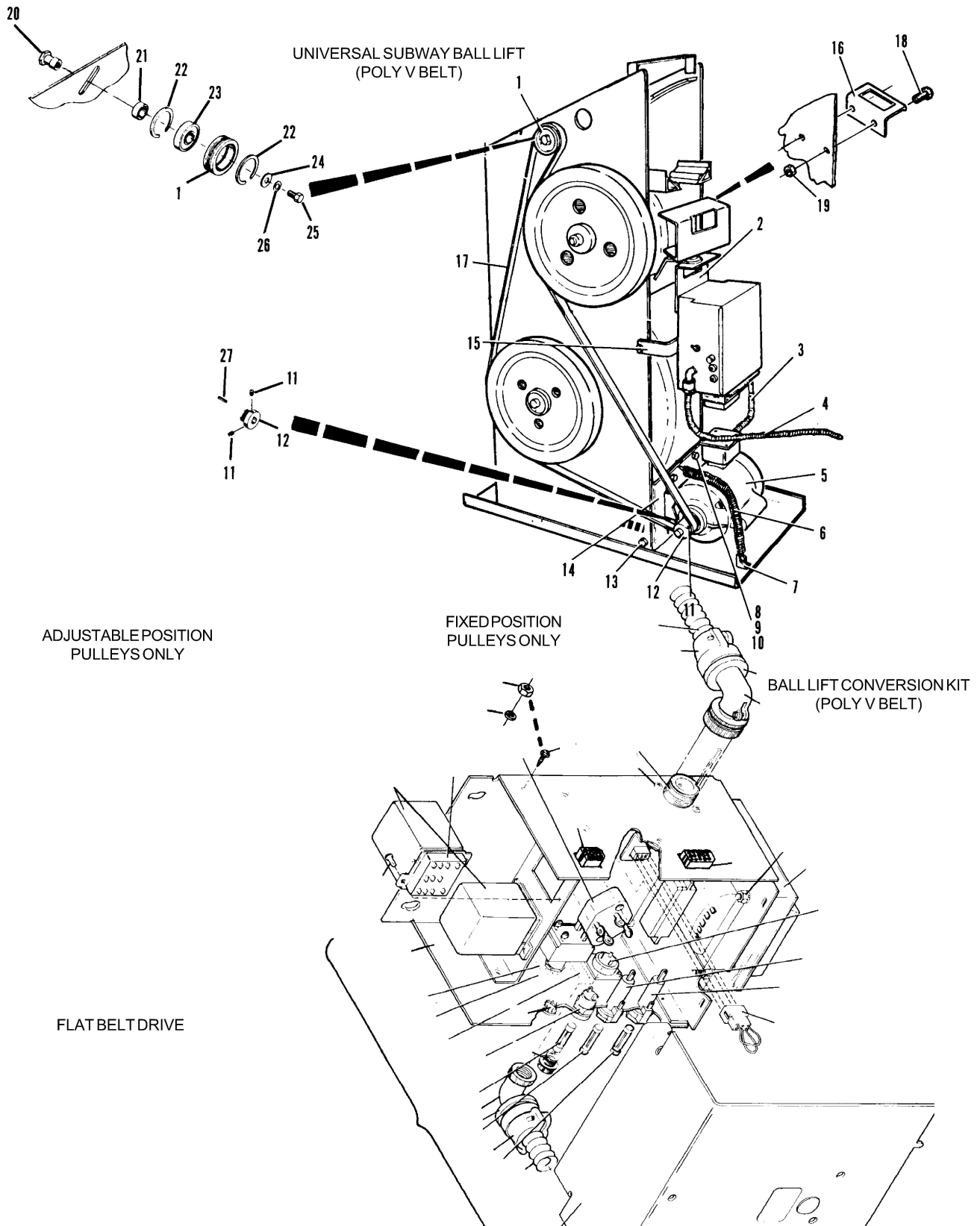


Index No.	Part No.	Description	Index No.	Part No.	Description
1.	53-520244-000	Poly V Idler Assembly	32.	11-001264-001	Hex Hd. Cap Screw (5/16-18 x 1")
2.	53-520205-000	Mounting Bracket	33.	53-520306-000	Spacer
3.	53-520212-000	Cable Assembly	34.	11-001909-001	Hex Hd. Cap Screw (5/16-18 x 1")
4.	53-600149-000	Wire Harness Assembly	35.	53-860431-000	Poly V Conversion Kit
5.	53-860322-010	Motor (1/4 H.P. 115/230 Volt 50/60 Hz) - See Note	36.	53-520300-000	Idler Arm
	53-860322-000	Motor (1/4 H.P. 115/230 Volt 50/60 Hz) - See Note	37.	11-001270-001	Hex Hd. Cap Screw (5/16-18 x 1-3/4")
6.	53-520234-000	Tension Spring	38.	53-520304-000	Spring Post
7.	53-520231-000	Spring Anchor	39.	53-520301-000	Tension Spring
8.	11-001262-001	Hex Hd. Cap Screw (5/16-18 x 3/4")	40.	10-621058-000	Square Key (3/16 x 3/16 x 1-5/16")
9.	11-190012-001	Plain Washer (5/16)	41.	N.A.	Motor Mount Conversion Kit - Not Shown (See Note)
10.	11-170108-001	Self Locking Nut - Thin (5/16-18)	42.	11-195015-001	Lockwasher (5/16)
11.	11-101202-001	Set Screw (5/16-18 x 3/8")	43.	24-200775-000	Idler Pulley (Model A) - Aluminum
12.	53-520159-000	Poly V Sheave (1-5/8" Dia.)		24-204380-000	Idler Pulley (Model A-2) - Nylon
	53-520582-000	Poly V Sheave (1" Dia.)	44.	11-430032-000	Bearing
13.	10-003007-000	Body Fit Hex Hd. Bolt (5/16-18 x 1-1/4")	45.	11-190014-001	Plain Washer (3/8)
14.	53-520228-000	Motor Support	46.	24-205125-000	Idler Pulley Assembly
15.	53-520241-000	Standoff Bracket	47.	53-520064-000	Hub
16.	N.A.	Mounting Bracket	48.	53-860555-000	Clutch Assembly
17.	53-520235-000	Poly V Belt	49.	53-520088-000	Spacer
18.	11-001180-001	Hex Hd. Cap Screw (1/4-20 x 5/8")	50.	53-520063-000	Pulley
19.	11-170007-001	Self Locking Nut (1/4-20)	51.	24-200947-000	Flat Drive Belt
20.	53-520071-000	Bearing Stud	52.	11-001258-001	Hex Hd. Cap Screw (5/16-18 x 1/2")
21.	53-520072-000	Spacer	53.	24-200773-000	Motor Pulley (1-17/64" Dia.) - Model A
22.	11-530531-000	Retaining Ring		24-204378-000	Motor Pulley (1-29/32" Dia.) - Model A-2
23.	11-430028-000	Bearing	54.	15-600946-000	Set Screw (10-32 x 1/2")
24.	11-190514-001	Plain Washer	55.	11-005184-001	Hex Socket Hd. Cap Screw (1/4-20 x 1")
25.	11-001342-001	Hex Hd. Cap Screw (3/8-16 x 3/4")	56.	11-195014-001	Lockwasher (1/4)
26.	11-195016-001	Lockwasher (3/8)	57.	11-008148-001	Flat Socket Hd. Cap Screw (1/4-20 x 3/4")
27.	10-620057-000	Square Key (3/16 x 3/16 x 1-1/4")	58.	53-520069-000	Retaining Washer
28.	11-170009-001	Self Locking Nut (5/16-18)	59.	53-520422-000	Outer Hub
29.	53-520302-000	Bearing Stud	60.	11-500552-000	Clutch and Bearing
30.	53-520303-000	Spacer	61.	53-520421-000	Inner Ring
31.	11-190529-001	Plain Washer	62.	11-533019-000	Retaining Ring

N.A. = No Longer Available

NOTE: If your ball lift is equipped with a 1140 RPM motor, order 53-860322-010. If your ball lift is equipped with a 1725 RPM motor, order 53-860322-000. Also, if your ball lift was originally supplied with a flat belt drive, order in addition to the motor, one each 53-860468-000 Motor Mount Conversion Kit. The new style motor will not fit on the old mounting plate.

Universal Poly V Subway Ball Lift, Flat Belt Drive (A & A-2) & Conversion Kit



**Universal Poly V Subway Ball Lift,
Flat Belt Drive (A & A-2) & Conversion Kit**