

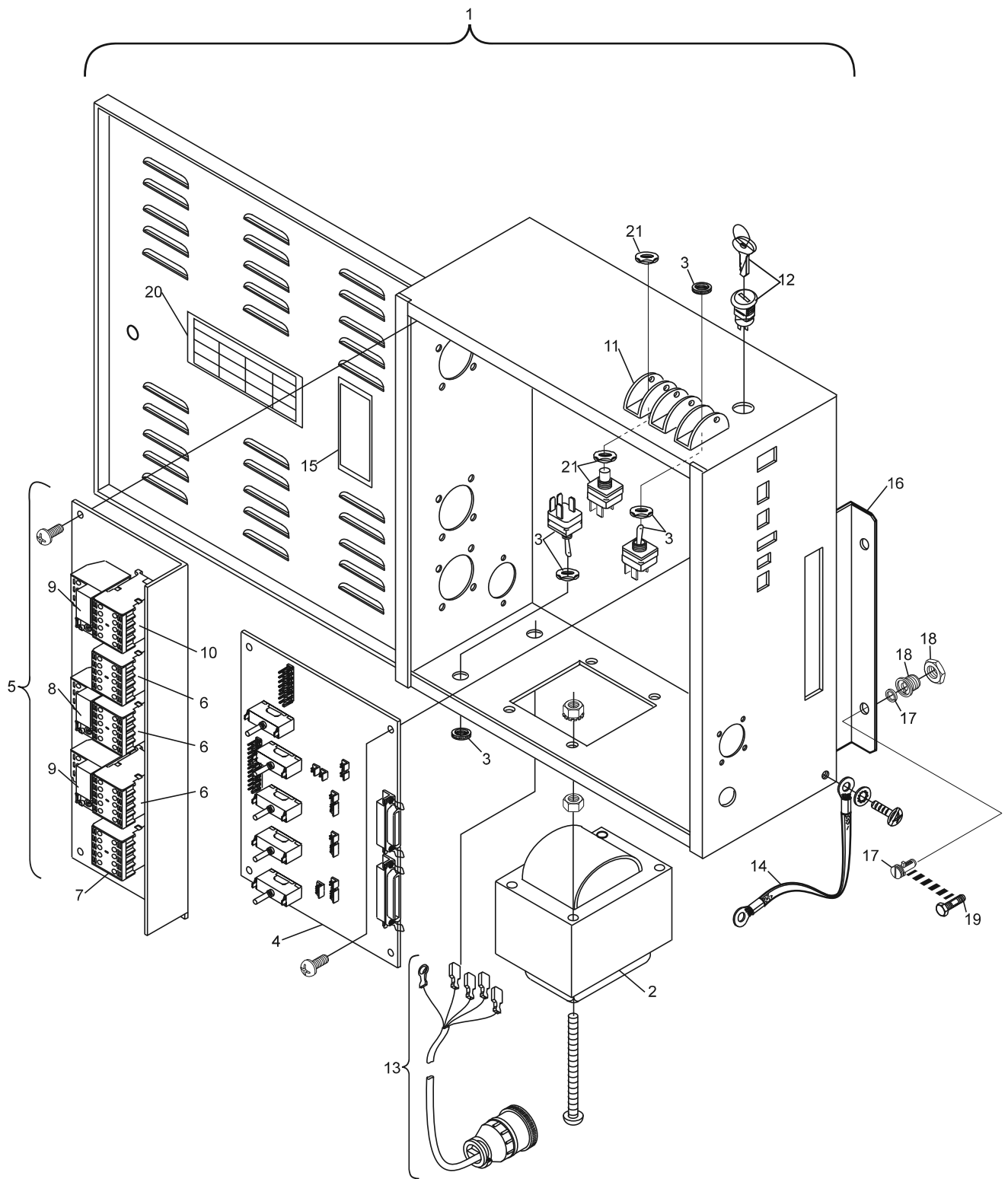
Index No.	Part No.	Description
1.	47-862712-000	N.A. High Voltage Box Assembly
2.	47-162939-000	Transformer Assembly
3.	11-615515-000	Toggle Switch
4.	47-862502-000	N.A. PCB Assembly - Note: <i>Electronic Repair Center services this item as part number 47-162839-800.</i>
5.	47-162942-000	N.A. Power Panel Assembly
6.	11-671513-000	Contactator
7.	11-671514-000	Relay Contactator
8.	11-671531-000	N.A. Relay
	11-671003-000	R.O. Overload Relay
9.	11-671532-000	N.A. Relay
10.	11-671521-000	N.A. Relay Contactator
11.	12-502527-000	N.A. Switch Guard
12.	47-162821-000	N.A. Keyswitch Assembly
13.	47-162937-000	N.A. Power Cord Assembly
14.	68-100273-000	Ground Cable Assembly
15.	N.A.	Label "Copyright"
16.	47-162514-000	N.A. Mounting Bracket
17.	11-601800-000	N.A. Quick Lock Stud w/Locking Ring
18.	11-601850-000	N.A. Quick Lock Receptacle w/Locknut
19.	*N.A.	Hex Head Flange Bolt w/Nylon Patch
20.	47-162600-000	N.A. Label "Overload Breaker Adjustment"
21.	11-615013-000	Momentary Switch

N.A. = No Longer Available

R.O. = Replacement Option

* Replaces index nos. #18 and #17.

High Voltage Box - Universal Voltage Silver Box



High Voltage Box - Universal Voltage Silver Box