

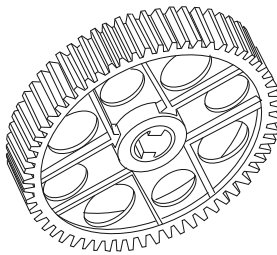
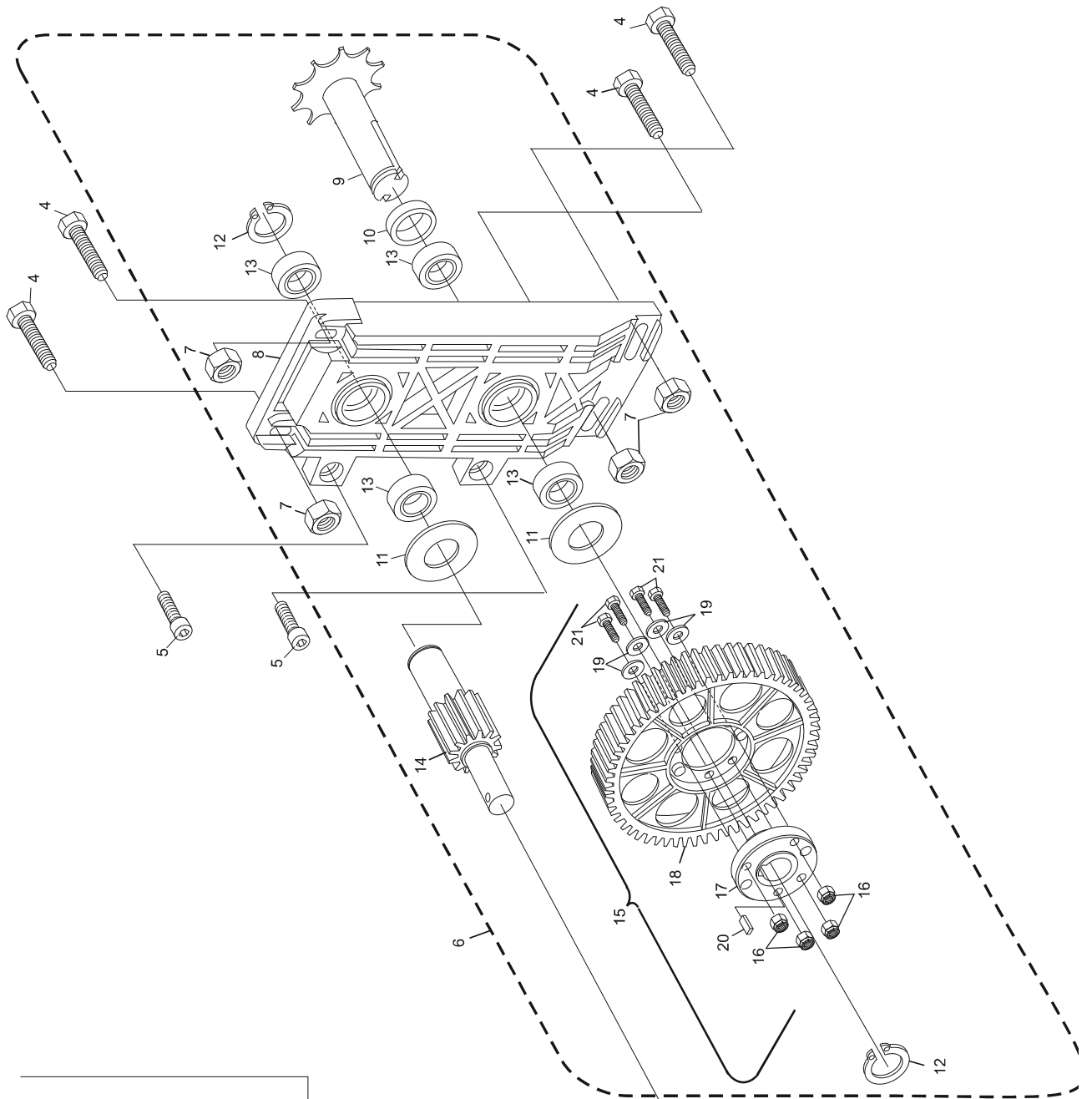
<b>Index</b>		
<b>No.</b>	<b>Part No.</b>	<b>Description</b>
1.	11-053901-000	V-Belt (10 mm x 6 mm x 875 mm)
2.	11-052690-001	Roll Pin (6 mm x 40 mm)
3.	99-070237-002	Pulley
4.	11-051045-001	Hex Hd. Cap Screw (10 mm x 30 mm)
5.	11-051532-001	Socket Hd. Cap Screw (10 mm x 30 mm)
6.	47-073598-009	Gear and Hub Assembly (new style for all GS machines)
7.	11-051745-001	Locknut (10 mm)
8.	*47-075076-001	Bearing Plate
9.	47-071823-004	Sprocket Shaft
10.	47-071706-004	Spacer Bushing
11.	11-054102-001	N.A. Washer (25 mm)
	47-861028-001	R.O. Pkg. (Qty.10) Shim Washer
12.	11-051856-001	Retaining Ring (25 mm)
13.	11-430051-000	Bearing
14.	47-071705-004	Pinion Shaft
15.	47-075184-003	Gear Assembly
16.	11-051533-001	Hex Head Cap Screw (8 mm x 25 mm)
17.	47-075073-003	Hub only - Metal
18.	47-075072-002	Gear - only
19.	11-052003-001	Washer (8,4 mm)
20.	11-053511-000	Key (10 mm x 32 mm)
21.	11-051533-001	Hex Head Cap Screws (8 mm x 25 mm)

*N.A. = No Longer Available*

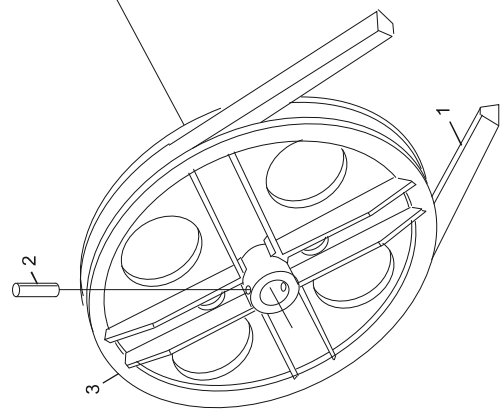
*R.O. = Replacement Option*

\* Replaces part number 47-071712-002 Bearing Plate

## Table Gear, Sweep Gear and Pulley Drive Assembly



OLD STYLE GEAR REPLACED  
BY INDEX NUMBER 15



### Table Gear, Sweep Gear and Pulley Drive Assembly