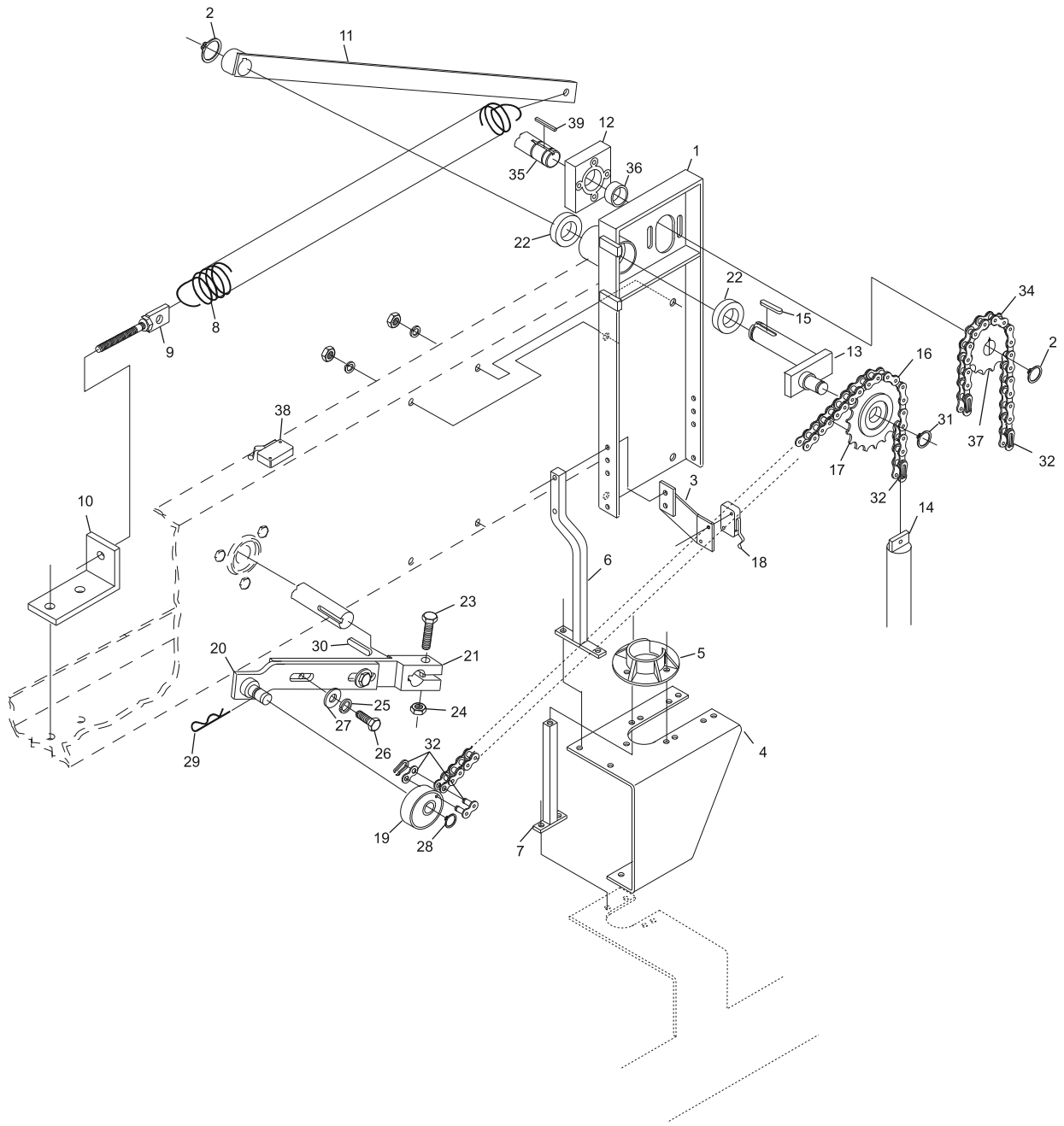


| Index No. | Part No. | Description |
|------------------|-----------------|---|
| 1. | 47-075482-002 | Guide Beam |
| 2. | 11-051856-001 | Retaining Ring (25 mm) |
| 3. | 47-075473-003 | Switch Support |
| 4. | 47-085436-003 | R.H. Guide Support Bracket |
| | 47-085430-003 | L.H. Guide Support Bracket |
| 5. | 47-085349-003 | Tube Guide |
| 6. | 47-085449-003 | Support Rod |
| 7. | 47-085446-003 | N.A. Support |
| | 47-085446-004 | R.O. Support |
| 8. | 55-050635-004 | Tension Spring |
| 9. | 47-074717-004 | Adjustment Screw |
| 10. | 47-075432-004 | Spring Bracket |
| 11. | 47-075475-004 | Lever |
| 12. | 47-085348-003 | Bearing Housing |
| 13. | 47-071591-004 | Sprocket Shaft |
| 14. | 47-070386-004 | Counter Weight |
| 15. | 11-053507-000 | Key (8 mm x 7 mm x 30 mm) |
| 16. | 47-075488-004 | 5/8" Chain (51 links and 2 connection links) |
| 17. | 47-011053-004 | Sprocket |
| 18. | 47-243028-004 | O.O.R. Switch (consolidated and nexgen electronics box) |
| 19. | 47-075352-004 | Pivot Bearing |
| 20. | 47-075357-003 | Crank Arm |
| 21. | 47-075356-003 | Crank |
| 22. | 11-430052-000 | Bearing |
| 23. | 11-051070-001 | Hex Head Cap Screw (12 mm x 60 mm) |
| 24. | 11-051747-001 | Locknut (12 mm) |
| 25. | 11-051772-001 | Lockwasher (12 mm) |
| 26. | 11-051062-001 | Hex Head Cap Screw (12 mm x 25 mm) |
| 27. | 11-052024-001 | N.A. Flat Washer (13 mm) |
| | 47-861010-001 | R.O. Flat Washer (13 mm) Pkg. of 20 |
| 28. | 11-054106-001 | N.A. Flat Washer (18 mm) |
| | 47-861031-001 | R.O. Flat Washer (18 mm) Pkg. of 10 |
| 29. | 11-054300-001 | Cotter Pin (2 mm) |
| 30. | 11-053493-000 | Key (8 mm x 7 mm x 45 mm) |
| 31. | 11-051852-000 | N.A. Retaining Ring (17 mm) |
| | 11-051852-001 | R.O. Retaining Ring (17 mm) |
| 32. | 11-600500-000 | Master Link (3-piece) |
| 33. | *47-862803-000 | N.A. Chain Lube (spray can) |
| | G34-205116-000 | R.O. Pinsetter Chain Lub (12 oz can) |
| 34. | 47-075486-004 | Chain |
| 35. | 47-075476-004 | Shaft |
| 36. | 11-430051-000 | Bearing |
| 37. | 47-075474-004 | N.A. Chain Gear |
| | 47-075474-009 | R.O. Chain Gear w/Set Screws |
| 38. | 47-243028-004 | TS-2 Switch |
| 39. | 11-053503-000 | Key (8 mm x 7 mm x 28 mm) |

N.A. = No Longer Available
R.O. = Replacement Option

* Not Illustrated

Guide Tower Assembly (Machine Series 443 and Above)



**Guide Tower Assembly
(Machine Series 443 and Above)**