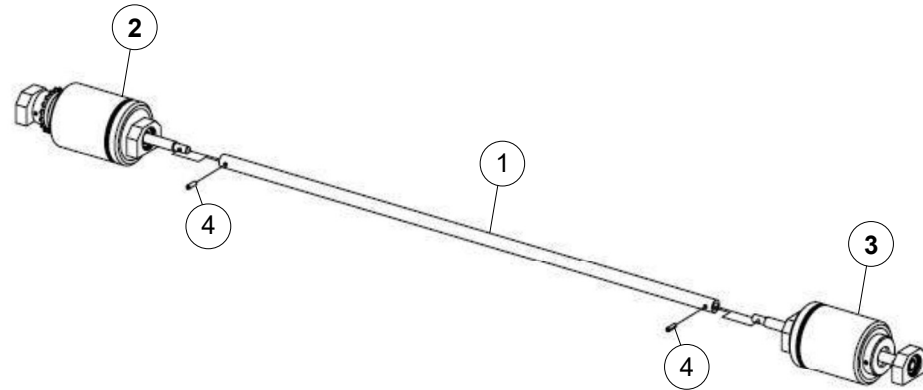


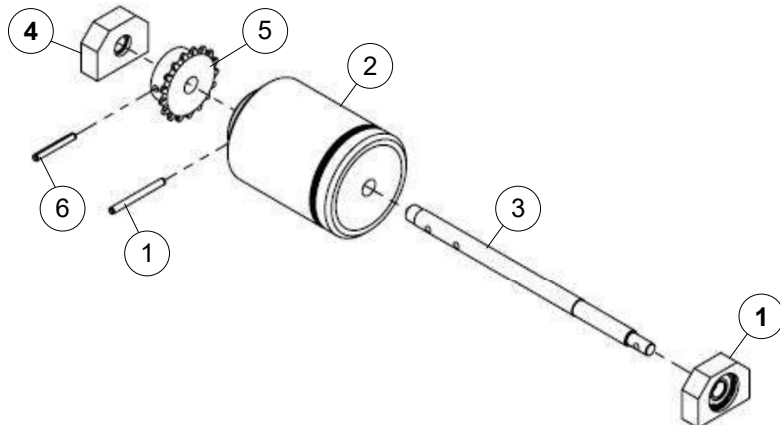
### Drive Shaft Assembly - 294-116-030

	NUMBER	DESCRIPTION
1	294-116-027	DRIVE SHAFT SLEEVE
2	294-116-028	LEFT HAND DRIVE SHAFT END
3	294-116-029	RIGHT HAND DRIVE SHAFT END
4	913-437-100	PIN, ROLL, 3/16 X 5/8 LG



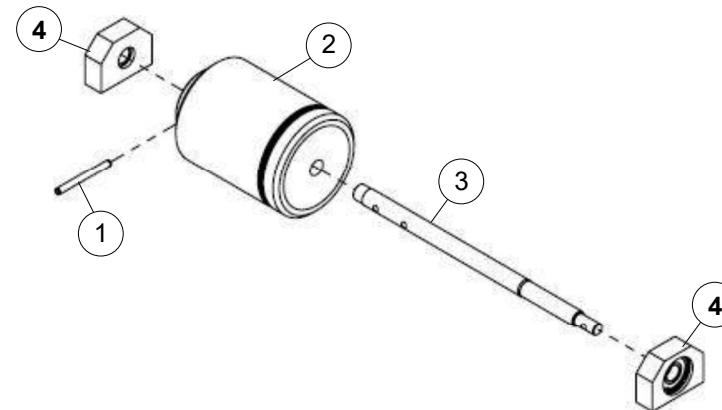
### Left Hand Drive Shaft End -294-116-028

	NUMBER	DESCRIPTION
1	01-087	PIN, ROLL, 3/16 X 2 LG
2	294-115-404	DRIVE WHEEL
3	294-116-026	DRIVE SHAFT END
4	294-116-034	DRIVE SHAFT BEARING BLOCK ASM
5	294-116-035	SPROCKET, #35 CHAIN, 17T
6	913-437-240	PIN, ROLL, 3/16 X 1-1/2 LG



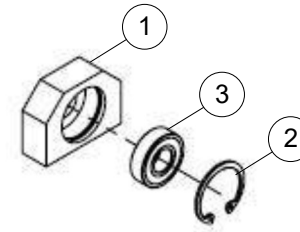
### Right Hand Drive Shaft End - 294-119-029

	NUMBER	DESCRIPTION
1	01-087	PIN, ROLL, 3/16 X 2 LG
2	294-115-404	DRIVE WHEEL
3	294-116-026	DRIVE SHAFT END
4	294-116-034	DRIVE SHAFT BEARING BLOCK ASM



**Drive Shaft Bearing Block Assembly - 294-116-034**

	<b>NUMBER</b>	<b>DESCRIPTION</b>
1	294-012-131	RETAINING RING, BEARING BLOCK
2	294-116-033	BEARING BLOCK, DRIVE SHAFT
3	701-035-040	BEARING, 12 mm X 28 mm X 8 mm

**Drive Motor Assembly**

	<b>NUMBER</b>	<b>DESCRIPTION</b>
1	01-014	NUT, NYLON LOCK, 8-32
2	01-098	SCREW, SET, CUP POINT 10-32
3	294-116-038	DRIVE MOTOR BRACKET ASM
4	294-116-041 294-116-040	INLINE DRIVE MOTOR, 110V INLINE DRIVE MOTOR, 220V
5	294-116-042	SPROCKET, #35, 14T

