

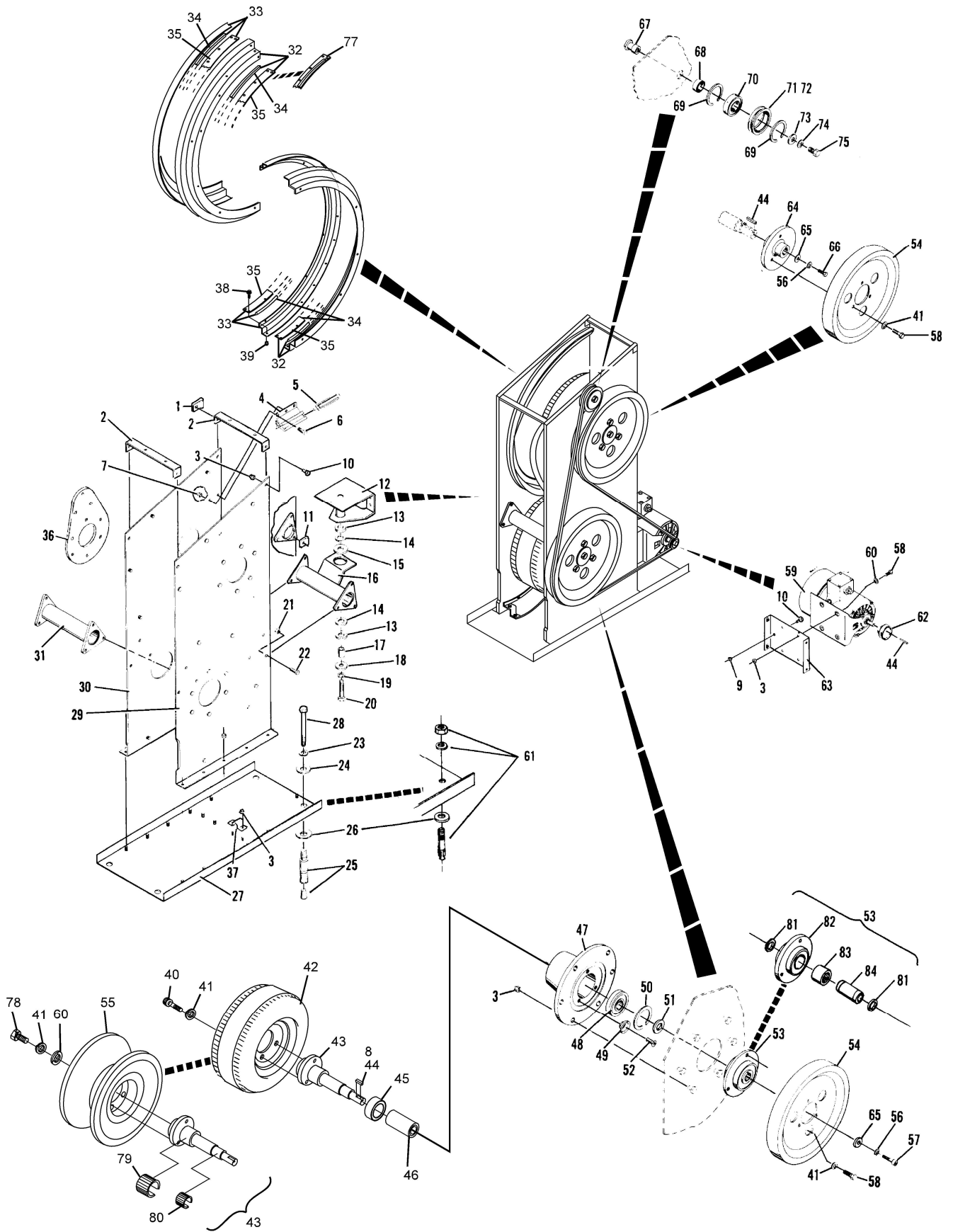
Index No.	Part No.	Description	Index No.	Part No.	Description
1.	N.A.	Wire Clip (5/8)	39.	11-155101-000	Spline Nut (10-32)
2.	53-520243-000	Spacer	40.	11-001258-001	Hex Hd. Cap Screw (5/16-18 x 1/2")
3.	11-170009-001	Self Locking Nut (5/16-18)	41.	11-195015-001	Lockwasher (5/16)
4.	N.A.	Transition Extrusion	42.	53-520060-000	Tire and Rim Assembly
5.	53-520075-000	Rubber and Plate Assy.	43.	53-520066-000	Shaft Assembly
6.	11-001180-001	Hex Hd. Cap Screw (1/4-20 x 5/8")	44.	10-620057-000	Square Key (3/16 x 3/16 x 1-1/4")
7.	11-170007-001	Self Locking Nut (1/4-20)	45.	11-430013-000	Bearing
8.	10-621058-000	Square Key (3/16 x 3/16 x 1-5/16")	46.	53-520067-000	Spacer
9.	11-125202-001	Hex Jam Nut (5/16-18)	47.	53-520068-000	Housing
10.	11-001262-001	Hex Hd. Cap Screw (5/16 -18 x 3/4")	48.	11-430042-000	Bearing
11.	11-605023-000	Wire Clip (7/16)	49.	53-520069-000	Retaining Washer
12.	53-520085-000	Coupling Assembly	50.	15-651243-000	Retaining Ring
13.	53-520092-000	Rubber Washer	51.	53-520088-000	Spacer
14.	11-422021-000	Thrust Bearing	52.	11-008148-001	Hex Socket Hd. Cap Screw w/Nylok (1/4-20 x 3/4")
15.	53-520091-000	Rubber Sleeve (1-3/8" Dia. x 1/4" Thick)	53.	53-860555-000	Clutch Assembly
	N.A.	Rubber Sleeve (1-3/8" Dia. x 3/4" Thick)	54.	53-520063-000	Pulley
16.	N.A.	Support Brace	55.	90-520060-000	Urethane Ball Wheel
17.	53-520090-000	Coupling Bushing (13/16" Dia. x 15/16" Long)	56.	11-195014-001	Lockwasher (1/4)
	24-200756-000	Coupling Bushing (13/16" Dia. x 1-1/2" Long)	57.	11-005184-001	Hex Socket Hd. Cap Screw (1/4-20 x 1")
18.	53-520089-000	Washer		11-002005-001	Heat Treated Hex Hd. Cap Screw (1/4-20 x 1-1/4")
19.	11-195020-001	Lockwasher (5/8)	58.	11-001263-001	Hex Hd. Cap Screw (5/16-18 x 7/8")
20.	11-001674-001	Hex Hd. Cap Screw (5/8-11 x 2-1/2")	59.	53-860322-010	Motor (1/4 H.P. 115/230 Volt 50/60 Hz) - See Note
	N.A.	Hex Hd. Cap Screw (5/8-11 x 3")		53-860322-000	Motor (1/4 H.P. 115/230 Volt 50/60 Hz) - See Note
21.	11-170011-001	Self Locking Nut (3/8-16)	60.	11-191012-001	Plain Washer (5/16)
22.	11-001344-001	Hex Hd. Cap Screw (3/8-16 x 1")	61.	11-111459-000	Stud Fastener (1/2-13)
23.	11-195018-001	Lockwasher (1/2)	62.	53-520027-000	Motor Sheave (2.25 O.D.)
24.	N.A.	Plain Washer	63.	53-520049-000	Motor Support
25.	11-111554-000	Concrete Fastener (1/2-13)		53-860468-000	Motor Support Conversion Kit (See Note)
26.	53-520078-002	Shim (18 Ga.)	64.	53-520064-000	Hub
	53-520078-003	Shim (12 Ga.)	65.	11-190530-001	Plain Washer
27.	53-520032-000	Base Plate Assembly	66.	11-002004-001	Heat Treated Hex Hd. Cap Screw (1/4-20 x 1")
28.	11-001512-000	Hex Hd. Cap Screw (1/2-13 x 2")	67.	53-520071-000	Bearing Stud
29.	N.A.	L.H. Side Plate Assembly	68.	53-520072-000	Spacer
30.	N.A.	R.H. Side Plate Assembly	69.	11-530531-000	Retaining Ring
31.	N.A.	Brace	70.	11-430028-000	Bearing
32.	53-520146-002	R.H. Track Assembly - Complete	71.	53-520025-000	Idler Sheave Only
33.	53-520146-003	L.H. Track Assembly - Complete	72.	53-520026-000	Idler Assembly
34.	53-520171-000	Rubber Track	73.	11-190514-001	Plain Washer
	N.A.	Cement (Quart)	74.	11-195016-001	Lockwasher (3/8)
	*11-676047-000	Cement (Gallon)	75.	11-001342-001	Hex Hd. Cap Screw (3/8-16 x 3/4")
35.	53-520172-000	Leather Track	76.	10-635317-000	V-Belt
36.	53-520058-000	Doubler	77.	90-520171-000	Urethane Ball Track Assembly (One Piece)
37.	53-520094-000	Bracket	78.	11-001268-001	Hex. Hd. Cap Screw (5/16-18 x 1-1/2")
38.	11-019654-001	Sems Hex Hd. Machine Screw (10-32 x 1/2")	79.	11-505104-000	Tolerance Ring
			80.	N.A.	Tolerance Ring
			81.	11-533019-000	Retaining Ring
			82.	53-520422-000	Outer Hub
			83.	11-500552-000	Clutch and Bearing
			84.	53-520421-000	Inner Ring

N.A. = No Longer Available

* Use Index No. 34 cement to bond 53-520171-000 rubber track to metal track.

NOTE: If your ball lift is equipped with a 1140 RPM motor, order 53-860322-010. If your ball lift is equipped with a 1725 RPM motor, order 53-860322000. Also, if your ball lift was originally supplied with a flat belt drive, order in addition to the motor, one each 53-860468-000 Motor Mount Conversion Kit. The new style motor will not fit on the old mounting plate.

Subway Power Lift Assembly - "V" Belt



Subway Power Lift Assembly - "V" Belt