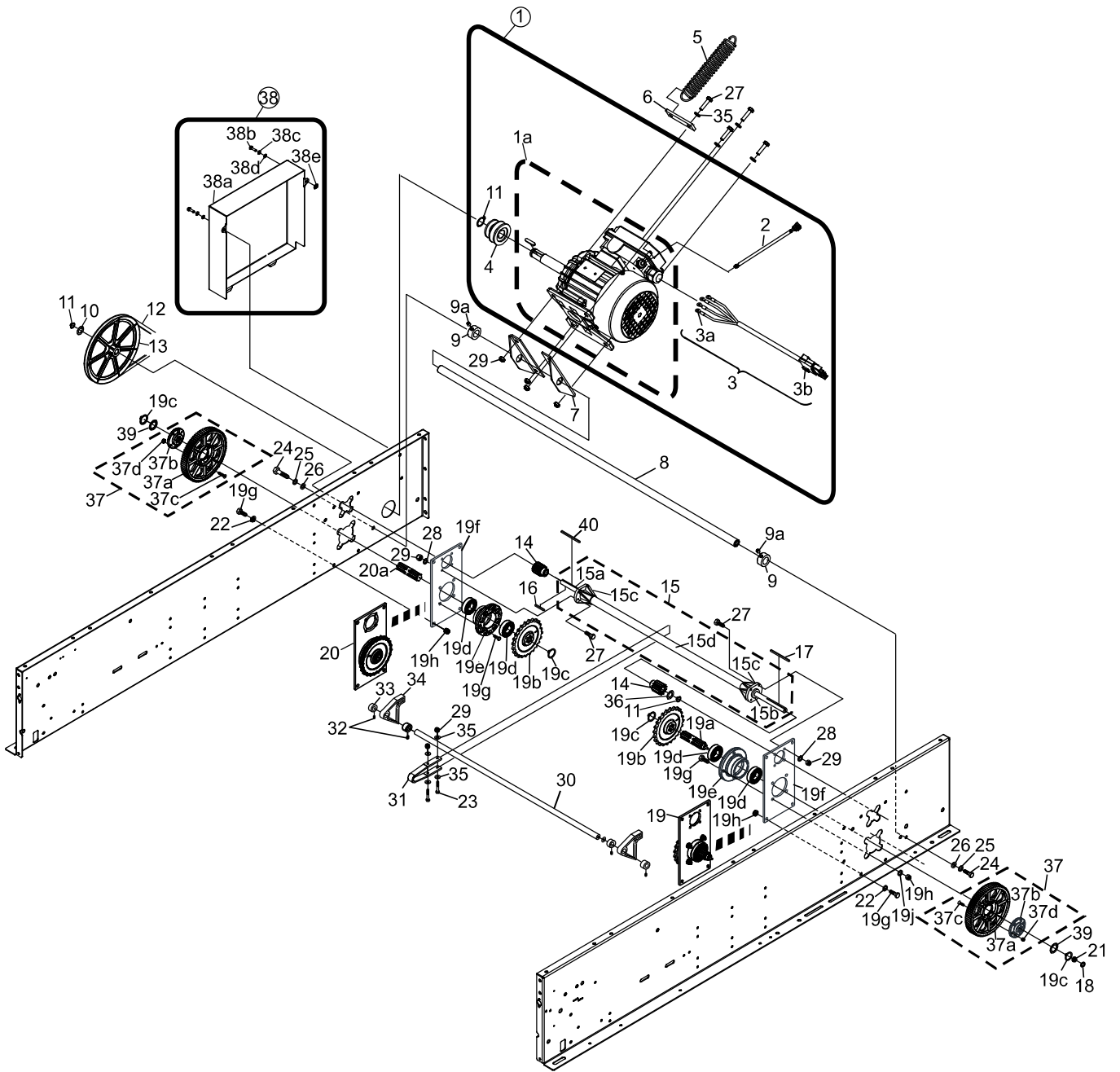


Index No.	Part No.	Package / Order Reference	Description
1.	55-079252-400		Motor - Complete with Pulley and Cables (400V)
	55-079252-230		Motor - Complete with Pulley and Cables (208V/230V)
1a.	55-079180-000		Motor (230V/400V) includes Key
2.	55-079251-400		Motor Over Load Cable Assembly
3.	55-143131-000		Assembly- Motor Cable
	3a. 11-612010-000		Ring Terminal
	3b. 11-696721-000		Housing
4.	55-010183-004		Motor Pulley
5.	99-020163-004		Spring
6.	55-019060-000		Spring Tension Bracket
7.	55-010184-004		Motor Mount Bracket
8.	55-050652-004		Shaft
9.	11-053616-000		Stop Ring
	9a. 11-053104-000		Socket Set Screw
10.	11-054106-001		Shim Washer
11.	55-051852-000		Retaining Clip
12.	11-053916-000		Belt
13.	99-070162-002		Pulley
14.	55-020308-004		Spur Gear
15.	55-020316-009		Drive Shaft Assembly
	15a. 55-020414-003		Drive Shaft
	15b. 11-430029-000		Bearing
	15c. 55-020392-004		Drive Shaft Bearing Retainer
	15d. 55-020415-003		Drive Shaft Protective Tube
16.	11-053505-000		Key (5 x 5 x 30 mm)
17.	11-053504-000		Key (5 x 5 x 45 mm)
18.	11-053481-000		Speed Nut
19.	55-020320-009		Pinion Gear Support Assembly (Right Hand)
	19a. 55-020401-004		Pinion Gear (Right Hand)
	19b. 55-020405-003		Chain Wheel (Sprocket)
	19c. 11-051856-001		Retaining Ring - External (25 mm, 23.2 mm ID, 34.2 OD)
	19d. 11-430051-000		Bearing
	19e. 55-020393-003		Bearing Retainer
	19f. 55-020395-003		Bearing Bracket
	19g. 11-051015-001		Hex Hd. Cap Screw (M8 x 25 mm)
	19h. 11-051744-001		Locknut (M8)
	19j. 11-051770-001		Lock Washer (M8 x 14.8 mm x 2 mm)
20.	55-020321-009		Pinion Gear Support Assembly (Left Hand)
	20a. 55-020400-002		Pinion Gear (Left Hand)
21.	55-020485-004		Gear - Switch Cluster (16 tooth)
22.	11-052003-001		Flat Washer
23.	11-051023-001		Hex Hd. Cap Screw (M6 x 55 mm)
24.	11-051005-001		Hex Hd. Cap Screw (M10 x 20 mm)
25.	11-051771-001		Lock Washer (M10)
26.	11-052018-001		Flat Washer (M10)
27.	11-051028-001		Hex Hd. Cap Screw (M6 x 25 mm)
28.	11-051769-001		Lock Washer (M6)
29.	11-051743-001		Locknut (M6)
30.	55-060237-004		Cross Shaft
31.	55-018020-000		Clamp
32.	11-053101-001		Set Screw (M6 x 8 mm)
33.	11-053619-001		Stop Ring (Collar)
34.	55-068032-009		Locking Cam (Stop Dog)
35.	11-052008-001		Flat Washer (M6)
36.	11-054107-001		Shim Washer
37.	55-020402-009		Drive Gear Assembly
	37a. 55-020402-003		Drive Gear
	37b. 55-020402-004		Hub
	37c. 11-052936-001		Screw - Socket Flat Head Countersunk
	37d. 11-051743-001		Hex Nut (M6)
38.	55-019179-009		Drive Cover Assembly
	38a. 55-019179-000		Drive Cover
	38b. 11-051018-001		Hex Head Cap Screw ( M6 x20 mm)
	38c. 11-051769-001		Lock Washer (M6)
	38d. 11-052008-001		Flat Washer (M6)
	38e. 11-053426-000		Pushnut (M6)
39.	11-054109-000		Shim Washer
40.	11-053513-000		Key (5 x 5 x 70 mm)

## Frame - Drive Assembly



**Frame - Drive Assembly**