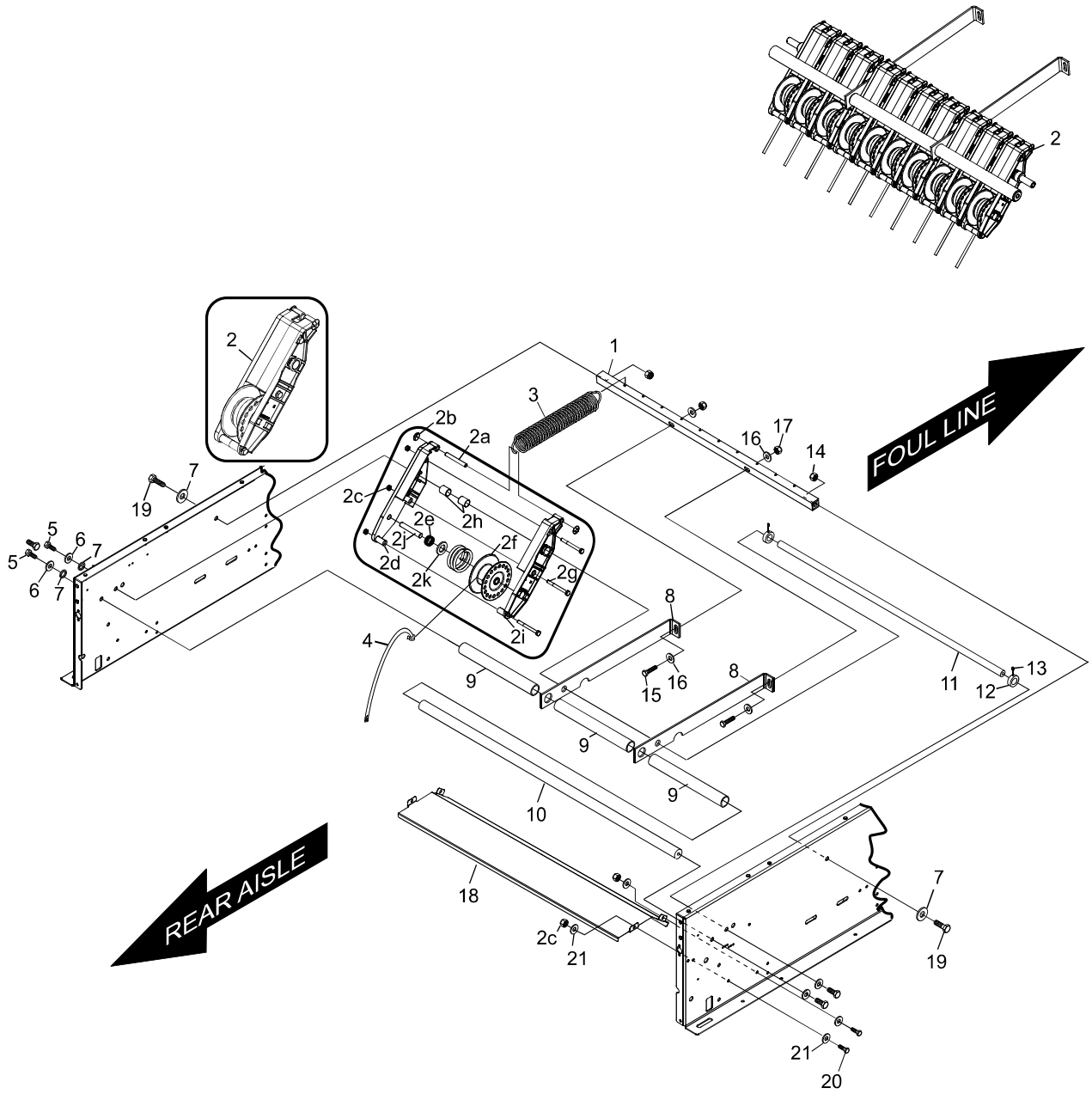


Index No.	Part No.	Package / Order Reference	Description
1.	55-059149-000		"L" Profile for Spring Support
2.	55-059355-009		String Lever Reel Assembly - includes index Nos. 2a, 2b, 2c, 2d, 2e, 2f, 2g, 2h, 2j, and 2k.
	2a. 55-050639-004		Spring Hook
	2b. 11-053478-001	47-861050-000	Speed Nut (Quicklock M8), Pkg Qty - 10
	2c. 11-051743-001		Hex Lock Nut (M6)
	2d. 55-050621-003		Reel Support Bracket (left-hand)
	2e. 55-050634-004		Spring For Lever Reel
	2f. 55-050633-003		Reel
	2g. 11-051083-001		Screw (M6 x 60 mm)
	2h. 55-078026-000		Bearing
	2i. 55-050622-003		Reel Support Bracket (right-hand)
	2j. 55-050637-004		Reel Shaft
	2k. 11-052027-001		Flat Washer (17 mm x 30 mm x 3 mm)
3.	55-050712-004		Tension Spring
4.	75-110012-001	*75-110012-009	String (5 m) - black
5.	11-051005-001		Hex Head Cap Screw (M10 x 20 mm)
6.	11-051771-001		Lockwasher (M10 x 18 mm x 2.2 mm)
7.	11-052018-001		Flat Washer (M10 x 20 mm x 2 mm)
8.	55-050607-003		Support Arm
9.	55-050994-004		Rod Support Cover
10.	55-050375-004		Reel Support Rod
11.	55-058047-000		String Lever Shaft
12.	11-053616-001		Stop Collar
13.	11-053104-000	47-861023-001	Set Screw (M6 x 6 mm), Pkg Qty - 20)
14.	11-051745-001		Hex Lock Nut (M10)
15.	11-051015-001		Hex Head Cap Screw (M8 x 25 mm)
16.	11-052003-001		Flat Washer (M8 x 16 mm x 1.6 mm)
17.	11-051744-001		Hex Lock Nut (M8)
18.	55-019156-000		Pan
19.	11-051019-001		Hex Head Cap Screw (M10 x 25 mm)
20.	11-051035-001		Hex Head cap Screw (M6 x 16 mm)
21.	11-052008-001		Flat Washer
22.	55-059150-009		String Lever Assembly

*\* 50 Meter Roll of String*

## String Lever Assembly



**String Lever Assembly**